

Shibue Couture

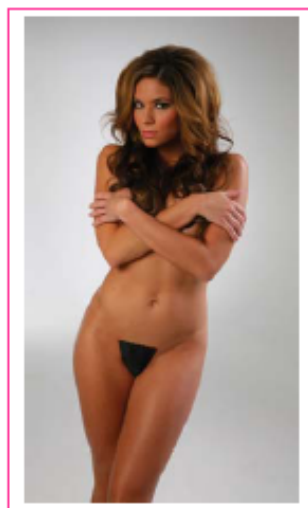
Patented Strapless Panty Cover Ups & Silicone Cover Ups

*"The Most Innovative and Technological Design" in women's lingerie for 2008 by
world re-known Contours Magazine*

About Shibue Couture Strapless Panty

Shibue Couture was born out of necessity. Designer Jenny Buettner was inspired several years ago when she was asked to be a bridesmaid in her sister's wedding. The bridesmaid's dress was a silky chocolate gown, it was gorgeous! There was a problem though -- every sort of undergarment worn beneath the dress showed panty lines.

"No problem," Jenny thought. She simply needed to pick up a product that eliminates panty lines. She searched desperately for that special product that would not show lines across her hips and back, and that would not squeeze in other areas. She did not want to go "commando," and she fancied something sexy and feminine. She became engrossed in her quest to find a solution. All of the products available in stores that touted "no panty lines" did not give her the desired effect. Frustrated and disappointed, she never came across what she needed. But she did find a solution: at the last minute, Jenny cut off the sides of her g-string, slapped on some double-sided tape, taped her panties to herself, and walked down the aisle without a panty line to be seen. Voila!



It occurred to Jenny that if she had an issue finding a product that truly eliminated panty lines, then perhaps there were millions of other women with the same problem. She decided to address the issue, and hence, a new lingerie solutions product was born.

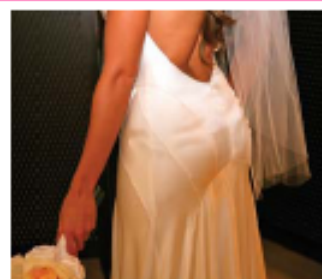
*After much time and research, energy and effort, trial and error, Jenny has perfected her idea. Officially called “**Shibue Strapless Panty®**” this new revolution in women’s lingerie fills a void in the intimate apparel market that had never been properly addressed.*

*Shibue Couture prides itself on making products that blend functionality with practicality, sexy with classy. Women of all ages and sizes are encouraged to experience the new freedom and comfort offered by the **Shibue Strapless Panty®**. You will love it!*

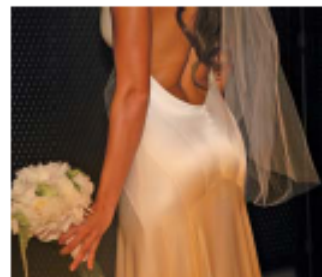
Shibue Strapless Panty®

Shibue Couture is the creator of the first and only Strapless Panty. **The only true solution to eliminate panty lines**, the **Shibue Strapless Panty®** is a must have in every woman's lingerie drawer.

The **Shibue Strapless Panty®** is washable and reusable and is held in place by a strip of silicone gel adhesive across the front and back of the panty. The silicone adhesive is permanently adhered to the panty and sticks repeatedly to the skin. Individual skin type and panty care will determine the life of the panty. Because the **Shibue Strapless Panty®** does not have any tight strings or thick bands around the waist it is comfortable and easy to wear. The **Shibue Strapless Panty®** is perfect for removing panty lines as well as adding a little spice and excitement to any outfit. A protective liner is supplied for the **Shibue Strapless Panty®** when not being worn.



Before
Shibue Strapless Panty®



After
Shibue Strapless Panty®



✦ Colors Available: Black, Nude, Red

✦ Sizes Available: XSmall/Small, Small/Medium, Medium/Large



Shibue Cover Ups®

Shibue Cover Ups® naturally blend to your skin to conceal the nipples. They adhere to the body with a silicon adhesive and are washable and reusable. Individual skin type and care will determine the life of the adhesive. *Shibue Cover Ups*® are available in a seamless fabric and in 100% silicone.

✦ Colors Available: Black, Nude, Red

✦ Sizes Available: One size fits all

✦ Styles Available: Flower Petals, Hearts



Shibue Silicone Cover Ups®

✦ Colors Available: Nude

✦ Sizes Available: One size fits all

✦ Material: 100% Silicone

